
MAVEN: Multi-Agent Variational Exploration

Anuj Mahajan^{*†}

Tabish Rashid[†]

Mikayel Samvelyan[‡]

Shimon Whiteson[†]

Abstract

Centralised training with decentralised execution is an important setting for cooperative deep multi-agent reinforcement learning due to communication constraints during execution and computational tractability in training. In this paper, we analyse value-based methods that are known to have superior performance in complex environments [43]. We specifically focus on QMIX [40], the current state-of-the-art in this domain. We show that the representational constraints on the joint action-values introduced by QMIX and similar methods lead to provably poor exploration and suboptimality. Furthermore, we propose a novel approach called MAVEN that hybridises value and policy-based methods by introducing a latent space for hierarchical control. The value-based agents condition their behaviour on the shared latent variable controlled by a hierarchical policy. This allows MAVEN to achieve committed, temporally extended exploration, which is key to solving complex multi-agent tasks. Our experimental results show that MAVEN achieves significant performance improvements on the challenging SMAC domain [43].

1 Introduction

Cooperative *multi-agent reinforcement learning* (MARL) is a key tool for addressing many real-world problems such as coordination of robot swarms [22] and autonomous cars [6]. However, two key challenges stand between cooperative MARL and such real-world applications. First, scalability is limited by the fact that the size of the joint action space grows exponentially in the number of agents. Second, while the training process can typically be centralised, partial observability and communication constraints often mean that execution must be decentralised, i.e., each agent can condition its actions only on its local action-observation history, a setting known as *centralised training with decentralised execution* (CTDE).

While both policy-based [13] and value-based [40, 48, 46] methods have been developed for CTDE, the current state of the art, as measured on SMAC, a suite of StarCraft II micromanagement benchmark tasks [43], is a value-based method called QMIX [40]. QMIX tries to address the challenges mentioned above by learning *factored* value functions. By decomposing the joint value function into factors that depend only on individual agents, QMIX can cope with large joint action spaces. Furthermore, because such factors are combined in a way that respects a monotonicity constraint, each agent can select its action based only on its own factor, enabling decentralised execution. However, this decentralisation comes with a price, as the monotonicity constraint restricts QMIX to suboptimal value approximations.

QTRAN[44], another recent method, performs this trade-off differently by formulating multi-agent learning as an optimisation problem with linear constraints and relaxing it with L_2 penalties for tractability.

In this paper, we shed light on a problem unique to decentralised MARL that arises due to inefficient exploration. Inefficient exploration hurts decentralised MARL, not only in the way it hurts single agent RL[33] (by increasing sample inefficiency[31, 30]), but also by interacting with the representational

^{*}Correspondence to: anuj.mahajan@cs.ox.ac.uk

[†]Dept. of Computer Science, University of Oxford

[‡]Russian-Armenian University

constraints necessary for decentralisation to push the algorithm towards suboptimal policies. Single agent RL can avoid convergence to suboptimal policies using various strategies like increasing the exploration rate (ϵ) or policy variance, ensuring optimality in the limit. However, we show, both theoretically and empirically, that the same is not possible in decentralised MARL.

Furthermore, we show that *committed* exploration can be used to solve the above problem. In committed exploration [36], exploratory actions are performed over extended time steps in a coordinated manner. Committed exploration is key even in single-agent exploration but is especially important in MARL, as many problems involve long-term coordination, requiring exploration to discover temporally extended joint strategies for maximising reward. Unfortunately, none of the existing methods for CTDE are equipped with *committed* exploration.

To address these limitations, we propose a novel approach called *multi-agent variational exploration* (MAVEN) that hybridises value and policy-based methods by introducing a latent space for hierarchical control. MAVEN’s value-based agents condition their behaviour on the shared latent variable controlled by a hierarchical policy. Thus, fixing the latent variable, each joint action-value function can be thought of as a mode of joint exploratory behaviour that persists over an entire episode. Furthermore, MAVEN uses mutual information maximisation between the trajectories and latent variables to learn a diverse set of such behaviours. This allows MAVEN to achieve committed exploration while respecting the representational constraints. We demonstrate the efficacy of our approach by showing significant performance improvements on the challenging SMAC domain.

2 Background

We model the fully cooperative multi-agent task as a Dec-POMDP [34], which is formally defined as a tuple $G = \langle S, U, P, r, Z, O, n, \gamma \rangle$. S is the state space of the environment. At each time step t , every agent $i \in \mathcal{A} \equiv \{1, \dots, n\}$ chooses an action $u^i \in U$ which forms the joint action $\mathbf{u} \in \mathbf{U} \equiv U^n$. $P(s'|s, \mathbf{u}) : S \times \mathbf{U} \times S \rightarrow [0, 1]$ is the state transition function. $r(s, \mathbf{u}) : S \times \mathbf{U} \rightarrow \mathbb{R}$ is the reward function shared by all agents and $\gamma \in [0, 1]$ is the discount factor. We consider *partially observable* settings, where each agent does not have access to the full state and instead samples observations $z \in Z$ according to observation function $O(s, i) : S \times \mathcal{A} \rightarrow Z$. The action-observation history for an agent i is $\tau^i \in T \equiv (Z \times U)^*$ on which it can condition its policy $\pi^i(u^i|\tau^i) : T \times U \rightarrow [0, 1]$. We use u^{-i} to denote the action of all the agents other than i and follow a similar convention for the policies π^{-i} . The joint policy π is based on *action-value function*: $Q^\pi(s_t, \mathbf{u}_t) = \mathbb{E}_{s_{t+1:\infty}, \mathbf{u}_{t+1:\infty}} [\sum_{k=0}^{\infty} \gamma^k r_{t+k} | s_t, \mathbf{u}_t]$. The goal of the problem is to find the optimal action value function Q^* . During centralised training, the learning algorithm has access to the action-observation histories of all agents and the full state. However, each agent can only condition on its own local action-observation history τ^i during decentralised execution (hence the name CTDE). For CTDE methods factoring action values over agents, we represent the individual agent utilities by $q_i, i \in \mathcal{A}$. An important concept for such methods is *decentralisability* (see IGM in [44]) which asserts that $\exists q_i$, such that $\forall s, \mathbf{u}$:

$$\arg \max_{\mathbf{u}} Q^*(s, \mathbf{u}) = \left(\arg \max_{u^1} q_1(\tau^1, u^1) \dots \arg \max_{u^n} q_n(\tau^n, u^n) \right)', \quad (1)$$

Fig. 1 gives the classification for MARL problems. While the containment is strict for partially observable setting, it can be shown that all tasks are decentralisable given full observability and sufficient representational capacity.

QMIX [40] is a value-based method that learns a monotonic approximation Q_{qmix} for the joint action-value function. Figure 8 in Appendix A illustrates its overall setup, reproduced for convenience. QMIX factors the joint-action Q_{qmix} into a monotonic nonlinear combination of individual utilities q_i of each agent which are learnt via a *utility network*. A *mixer network* with nonnegative weights is responsible for combining the agent’s utilities for their chosen actions u^i into $Q_{qmix}(s, \mathbf{u})$. This nonnegativity ensures that $\frac{\partial Q_{qmix}(s, \mathbf{u})}{\partial q_i(s, u^i)} \geq 0$, which in turn guarantees Eq. (1). This decomposition allows for an efficient, tractable maximisation as it can be performed in $\mathcal{O}(n|U|)$ time as opposed to $\mathcal{O}(|U|^n)$. Additionally, it allows for easy decentralisation as each agent can independently perform an argmax. During learning, the QMIX agents use ϵ -greedy exploration over their individual utilities to ensure sufficient exploration. For VDN [46] the factorization is further restrained to be just the sum of utilities: $Q_{vdm}(s, \mathbf{u}) = \sum_i q_i(s, u^i)$.

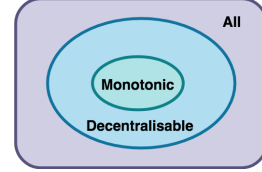


Figure 1: Classification of MARL problems.

QTRAN [44] is another value-based method. Theorem 1 in the QTRAN paper guarantees optimal decentralisation by using linear constraints between agent utilities and joint action values, but it imposes $\mathcal{O}(|S||U|^n)$ constraints on the optimisation problem involved, where $|\cdot|$ gives set size. This is computationally intractable to solve in discrete state-action spaces and is impossible given continuous state-action spaces. The authors propose two algorithms (QTRAN-base and QTRAN-alt) which relax these constraints using two L2 penalties. While QTRAN tries avoid QMIX’s limitations, we found that it performs poorly in practice on complex MARL domains (see Section 5) as it deviates from the exact solution due to these relaxations.

3 Analysis

In this section, we analyse the policy learnt by QMIX in the case where it cannot represent the true optimal action-value function. Our analysis is not restricted to QMIX and can easily be extended to similar algorithms like VDN [46] whose representation class is a subset of QMIX. Intuitively, monotonicity implies that the optimal action of agent i does not depend on the actions of the other agents. This motivates us to characterise the class of Q -functions that cannot be represented by QMIX, which we call *nonmonotonic* Q functions.

Definition 1 (Nonmonotonicity). *For any state $s \in S$ and agent $i \in \mathcal{A}$ given the actions of the other agents $u^{-i} \in U^{n-1}$, the Q -values $Q(s, (u^i, u^{-i}))$ form an ordering over the action space of agent i . Define $C(i, u^{-i}) := \{(u_1^i, \dots, u_{|U|}^i) | Q(s, (u_j^i, u^{-i})) \geq Q(s, (u_{j+1}^i, u^{-i})), j \in \{1, \dots, |U|\}, u_j^i \in U, j \neq j' \implies u_j^i \neq u_{j'}^i\}$, as the set of all possible such orderings over the action-values. The joint-action value function is **nonmonotonic** if $\exists i \in \mathcal{A}, u_1^{-i} \neq u_2^{-i}$ s.t. $C(i, u_1^{-i}) \cap C(i, u_2^{-i}) = \emptyset$.*

A simple example of a nonmonotonic Q -function is given by the payoff matrix of the two-player three-action matrix game shown on Table 1(a). Table 1(b) shows the values learned by QMIX under *uniform visitation*, i.e., when all state-action pairs are explored equally.

	A	B	C		A	B	C
A	10.4	0	10	A	6.08	6.08	8.95
B	0	10	10	B	6.00	5.99	8.87
C	10	10	10	C	8.99	8.99	11.87
(a)				(b)			

Table 1: (a) An example of a nonmonotonic payoff matrix, (b) QMIX values under uniform visitation.

Of course, the fact that QMIX cannot represent the optimal value function does not imply that the policy it learns must be suboptimal. However, the following analysis establishes the suboptimality of such policies.

Theorem 1 (Uniform visitation). *For n -player, $k \geq 3$ -action matrix games ($|\mathcal{A}| = n, |U| = k$), under uniform visitation, Q_{qmixon} learns a δ -suboptimal policy for any time horizon T , for any $0 < \delta \leq R \left[\sqrt{\frac{a(b+1)}{a+b}} - 1 \right]$ for the payoff matrix (n -dimensional) given by the template below, where $b = \sum_{s=1}^{k-2} \binom{n+s-1}{s}$, $a = k^n - (b+1)$, $R > 0$:*

$$\begin{bmatrix} R+\delta & 0 & \dots & R \\ 0 & & \ddots & \\ \vdots & \ddots & & \vdots \\ R & \dots & & R \end{bmatrix}$$

Proof. see Appendix B.1 □

We next consider ϵ -greedy visitation, in which each agent uses an ϵ -greedy policy and ϵ decreases over time. Below we provide a probabilistic bound on the maximum possible value of δ for QMIX to learn a suboptimal policy for any time horizon T .

Theorem 2 (ϵ -greedy visitation). *For n -player, $k \geq 3$ -action matrix games, under ϵ -greedy visitation $\epsilon(t)$, Q_{qmix} learns a δ -suboptimal policy for any time horizon T with probability $\geq 1 - \left(\exp(-\frac{Tv^2}{2}) + (k^n - 1) \exp(-\frac{Tv^2}{2(k^n - 1)^2}) \right)$, for any $0 < \delta \leq R \left[\sqrt{a \left(\frac{vb}{2(1-v/2)(a+b)} + 1 \right)} - 1 \right]$ for the payoff matrix given by the template above, where $b = \sum_{s=1}^{k-2} \binom{n+s-1}{s}$, $a = k^n - (b + 1)$, $R > 0$ and $v = \epsilon(T)$.*

Proof. see Appendix B.2 □

The reliance of QMIX on ϵ -greedy action selection prevents it from engaging in committed exploration [36], in which a precise sequence of actions must be chosen in order to reach novel, interesting parts of the state space. Moreover, Theorems 1 and 2 imply that the agents can latch onto suboptimal behaviour early on, due to the monotonicity constraint. Theorem 2 in particular provides a surprising result: For a fixed time budget T , increasing QMIX’s exploration rate lowers its probability of learning the optimal action due to its representational limitations. Intuitively this is because the monotonicity constraint can prevent the Q -network from correctly remembering the true value of the optimal action (currently perceived as suboptimal). We hypothesise that the lack of a principled exploration strategy coupled with these representational limitations can often lead to catastrophically poor exploration, which we confirm empirically.

4 Methodology

In this section, we propose *multi-agent variational exploration* (MAVEN), a new method that overcomes the detrimental effects of QMIX’s monotonicity constraint on exploration. MAVEN does so by learning a diverse ensemble of monotonic approximations with the help of a latent space. Its architecture consists of value-based agents that condition their behaviour on the shared latent variable z controlled by a hierarchical policy that offloads ϵ -greedy with committed exploration. Thus, fixing z , each joint action-value function is a monotonic approximation to the optimal action-value function that is learnt with Q -learning. Furthermore, each such approximation can be seen as a mode of committed joint exploratory behaviour. The latent policy over z can then be seen as exploring the space of *joint behaviours* and can be trained using any policy learning method. Intuitively, the z space should map to diverse modes of behaviour. Fig. 2 illustrates the complete setup for MAVEN. We first focus on the lefthand side of the diagram, which describes the learning framework for the latent space policy and the joint action values. We parametrise the hierarchical policy by θ , the agent utility network with η , the hypernet map from latent variable z used to condition utilities by ϕ , and the mixer net with ψ . η can be associated with a feature extraction module per agent and ϕ can be associated with the task of modifying the utilities for a particular mode of exploration. We model the hierarchical policy $\pi_z(\cdot|s_0; \theta)$ as a transformation of a simple random variable $x \sim p(x)$ through a neural network parameterised by θ ; thus $z \sim g_\theta(x, s_0)$, where s_0 is initial state. Natural choices for $p(x)$ are uniform for discrete z and uniform or normal for continuous z .

We next provide a coordinate ascent scheme for optimising the parameters. Fixing z gives a joint action-value function $Q(\mathbf{u}, s; z, \phi, \eta, \psi)$ which implicitly defines a greedy deterministic policy $\pi_A(\mathbf{u}|s; z, \phi, \eta, \psi)$ (we drop the parameter dependence wherever its inferable for clarity of pre-

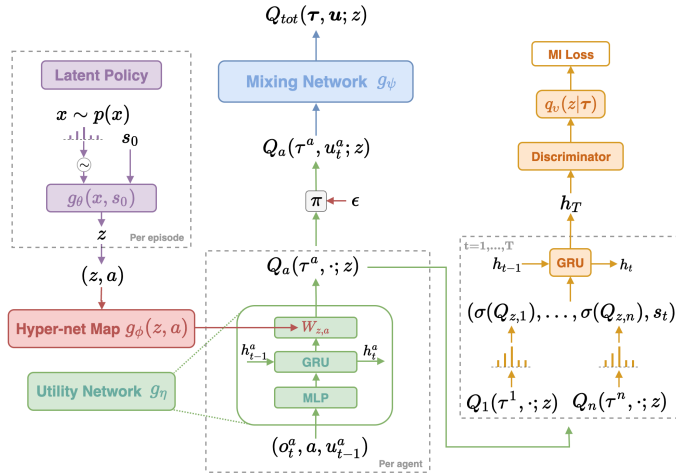


Figure 2: Architecture for MAVEN.

sentation). This gives the corresponding Q -learning loss:

$$\mathcal{L}_{QL}(\phi, \eta, \psi) = \mathbb{E}_{\pi_A}[(Q(\mathbf{u}_t, s_t; z) - [r(\mathbf{u}_t, s_t) + \gamma \max_{\mathbf{u}_{t+1}} Q(\mathbf{u}_{t+1}, s_{t+1}; z)])^2],$$

where t is the time step. Next, fixing ϕ, η, ψ , the hierarchical policy over $\pi_z(\cdot|s_0; \theta)$ is trained on the cumulative trajectory reward $\mathcal{R}(\tau, z|\phi, \eta, \psi) = \sum_t r_t$ where τ is the joint trajectory.

Algorithm 1 MAVEN

```

Initialize parameter vectors  $v, \phi, \eta, \psi, \theta$ 
Learning rate  $\leftarrow \alpha, \mathcal{D} \leftarrow \{\}$ 
for each episodic iteration do
   $s_0 \sim \rho(s_0), x \sim p(x), z \sim g_\theta(x; s_0)$ 
  for each environment step  $t$  do
     $\mathbf{u}_t \sim \pi_A(u|s_t; z, \phi, \eta, \psi)$ 
     $s_{t+1} \sim p(s_{t+1}|s_t, \mathbf{u}_t)$ 
     $\mathcal{D} \leftarrow \mathcal{D} \cup \{(s_t, \mathbf{u}_t, r(s_t, \mathbf{u}_t), r_{aux}^z(\mathbf{u}_t, s_t), s_{t+1})\}$ 
  end for
  for each gradient step do
     $\phi \leftarrow \phi + \alpha \hat{\nabla}_\phi (\lambda_{MI} \mathcal{J}_V - \lambda_{QL} \mathcal{L}_{QL})$  (Hypernet update)
     $\eta \leftarrow \eta + \alpha \hat{\nabla}_\eta (\lambda_{MI} \mathcal{J}_V - \lambda_{QL} \mathcal{L}_{QL})$  (Feature update)
     $\psi \leftarrow \psi + \alpha \hat{\nabla}_\psi (\lambda_{MI} \mathcal{J}_V - \lambda_{QL} \mathcal{L}_{QL})$  (Mixer update)
     $v \leftarrow v + \alpha \hat{\nabla}_v \lambda_{MI} \mathcal{J}_V$  (Variational update)
     $\theta \leftarrow \theta + \alpha \hat{\nabla}_\theta \mathcal{J}_{RL}$  (Latent space update)
  end for
end for

```

Thus, the hierarchical policy objective for z , freezing the parameters ψ, η, ϕ is given by:

$$\mathcal{J}_{RL}(\theta) = \int \mathcal{R}(\tau_A|z) p_\theta(z|s_0) \rho(s_0) dz ds_0.$$

However, the formulation so far does not encourage diverse behaviour corresponding to different values of z and all the values of z could collapse to the same joint behaviour. To prevent this, we introduce a *mutual information* (MI) objective between the observed trajectories $\tau \triangleq \{(\mathbf{u}_t, s_t)\}$, which are representative of the joint behaviour and the latent variable z . The actions \mathbf{u}_t in the trajectory are represented as a stack of agent utilities and σ is an operator that returns a per-agent Boltzmann policy w.r.t. the utilities at each time step t , ensuring the MI objective is differentiable and helping train the network parameters (ψ, η, ϕ) . We use an RNN [20] to encode the entire trajectory and then maximise $MI(\sigma(\tau), z)$. Intuitively, the MI objective encourages visitation of diverse trajectories τ while at the same time making them identifiable given z , thus elegantly separating the z space into different exploration modes. The MI objective is:

$$\mathcal{J}_{MI} = \mathcal{H}(\sigma(\tau)) - \mathcal{H}(\sigma(\tau)|z) = \mathcal{H}(z) - \mathcal{H}(z|\sigma(\tau)),$$

where \mathcal{H} is the entropy. However, neither the entropy of $\sigma(\tau)$ nor the conditional of z given the former is tractable for nontrivial mappings, which makes directly using MI infeasible. Therefore, we introduce a variational distribution $q_v(z|\sigma(\tau))$ [50, 3] parameterised by v as a proxy for the posterior over z , which provides a lower bound on \mathcal{J}_{MI} (see Appendix B.3).

$$\mathcal{J}_{MI} \geq \mathcal{H}(z) + \mathbb{E}_{\sigma(\tau), z}[\log(q_v(z|\sigma(\tau)))].$$

We refer to the righthand side of the above inequality as the variational MI objective $\mathcal{J}_V(v, \phi, \eta, \psi)$. The lower bound matches the exact MI when the variational distribution equals $p(z|\sigma(\tau))$, the true posterior of z . The righthand side of Fig. 2 gives the network architectures corresponding to the variational MI loss. Since

$$\mathbb{E}_{\tau, z}[\log(q_v(z|\sigma(\cdot)))] = \mathbb{E}_\tau[-KL(p(z|\sigma(\cdot))||q_v(z|\sigma(\cdot))) - \mathcal{H}(z|\sigma(\cdot))],$$

where the nonnegativity of the KL divergence on the righthand side implies that a bad variational approximation can hurt performance as it induces a gap between the true objective and the lower bound [32, 2]. This problem is especially important if z is chosen to be continuous as for discrete

distributions the posterior can be represented exactly as long as the dimensionality of v is greater than the number of categories for z . The problem can be addressed by various state-of-the-art developments in amortised variational inference [42, 41]. The variational approximation can also be seen as a discriminator/critic that induces an auxiliary reward field $r_{aux}^z(\tau) = \log(q_v(z|\sigma(\tau))) - \log(p(z))$ on the trajectory space. Thus the overall objective becomes:

$$\max_{v, \phi, \eta, \psi, \theta} \mathcal{J}_{RL}(\theta) + \lambda_{MI} \mathcal{J}_V(v, \phi, \eta, \psi) - \lambda_{QL} \mathcal{L}_{QL}(\phi, \eta, \psi),$$

where $\lambda_{MI}, \lambda_{QL}$ are positive multipliers. For training (see Algorithm 1), at the beginning of each episode we sample an x and obtain z and then unroll the policy until termination and train ψ, η, ϕ, v on the Q -learning loss corresponding to greedy policy for the current exploration mode and the variational MI reward. The hierarchical policy parameters θ can be trained on the true task return using any policy optimisation algorithm. At test time, we sample z at the start of an episode and then perform a decentralised argmax on the corresponding Q -function to select actions. Thus, MAVEN achieves committed exploration while respecting QMIX’s representational constraints.

5 Experimental Results

We now empirically evaluate MAVEN on various new and existing domains.

5.1 m -step matrix games

To test the how nonmonotonicity and exploration interact, we introduce a simple m -step matrix game. The initial state is nonmonotonic, zero rewards lead to termination, and the differentiating states are located at the terminal ends; there are $m - 2$ intermediate states. Fig. 3(a) illustrates the m -step matrix game for $m = 10$. The optimal policy is to take the top left joint action and finally take the bottom right action, giving an optimal total payoff of $m + 3$. As m increases, it becomes increasingly difficult to discover the optimal policy using ϵ -dithering and a *committed* approach becomes necessary. Additionally, the initial state’s nonmonotonicity provides inertia against switching the policy to the other direction. Fig. 3(b) plots median returns for $m = 10$. QMIX gets stuck in a suboptimal policy with payoff 10, while MAVEN successfully learns the true optimal policy with payoff 13. This example shows how representational constraints can hurt performance if they are left unmoderated.

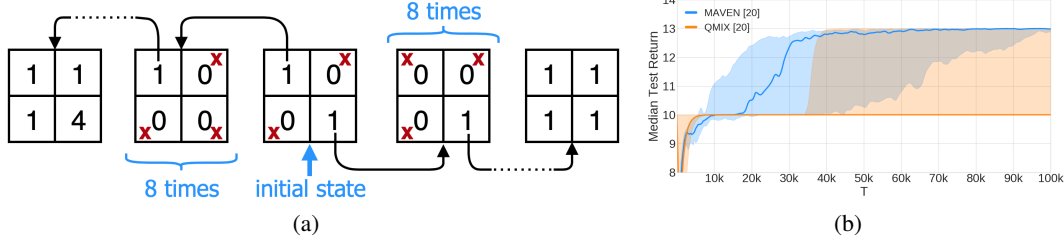


Figure 3: (a) m -step matrix game for $m = 10$ case (b) median return of MAVEN and QMIX method on 10-step matrix game for 100k training steps, averaged over 20 random initializations (2nd and 3rd quartile is shaded).

5.2 StarCraft II

StarCraft Multi-Agent Challenge We consider a challenging set of cooperative StarCraft II maps from the SMAC benchmark [43] which Samvelyan et al. have classified as **Easy**, **Hard** and **Super Hard**. Our evaluation procedure is similar to [40, 43]. We pause training every 100000 time steps and run 32 evaluation episodes with decentralised greedy action selection. After training, we report the median *test win rate* (percentage of episodes won) along with 2nd and 3rd quartiles (shaded in plots). We use grid search to tune hyperparameters. Appendix C.1 contains additional experimental details. We compare MAVEN, QTRAN, QMIX, COMA [13] and IQL [48] on several SMAC maps.

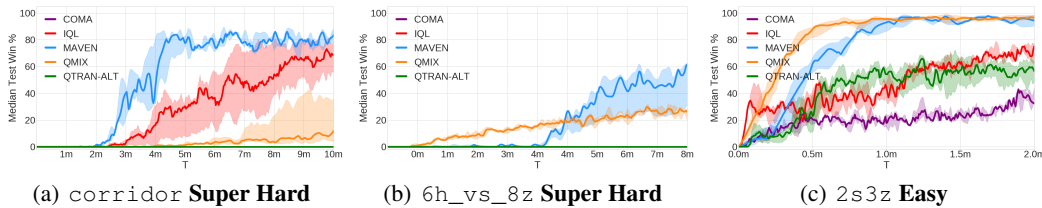


Figure 4: The performance of various algorithms on three SMAC maps.

Here we present the results for two **Super Hard** maps `corridor` & `6h_vs_8z` and an **Easy** map `2s3z`. The `corridor` map, in which 6 Zealots face 24 enemy Zerglings, requires agents to make effective use of the terrain features and block enemy attacks from different directions. A properly *coordinated* exploration scheme applied to this map would help the agents discover a suitable unit positioning quickly and improve performance. `6h_vs_8z` requires fine grained ‘focus fire’ by the allied Hydralisks. `2s3z` requires agents to learn “focus fire” and interception. Figs. 4(a) to 4(c) show the median win rates for the different algorithms on the maps; additional plots can be found in Appendix C.2. The plots show that MAVEN performs substantially better than all alternate approaches on the **Super Hard** maps with performance similar to QMIX on **Hard** and **Easy** maps. Thus MAVEN performs better as difficulty increases. Furthermore, QTRAN does not yield satisfactory performance on most SMAC maps (0% win rate). The map on which it performs best is `2s3z` (Fig. 4(c)), an **Easy** map, where it is still worse than QMIX and MAVEN. We believe this is because QTRAN enforces decentralisation using only relaxed L2 penalties on domains.

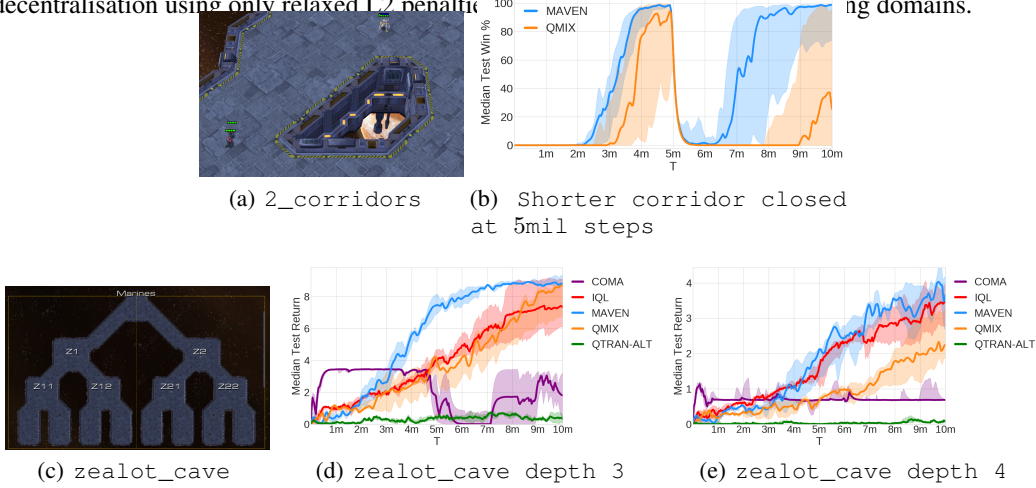


Figure 5: State exploration and policy robustness

Exploration and Robustness Although SMAC domains are challenging, they are not specially designed to test state-action space exploration, as the units involved start engaging immediately after spawning. We thus introduce a new SMAC map designed specifically to assess the effectiveness of multi-agent exploration techniques and their ability to adapt to changes in the environment. The `2-corridors` map features two Marines facing an enemy Zealot. In the beginning of training, the agents can make use of two corridors to attack the enemy (see Fig. 5(a)). Halfway through training, the short corridor is blocked. This requires the agents to adapt accordingly and use the long corridor in a coordinated way to attack the enemy. Fig. 5(b) presents the win rate for MAVEN and QMIX for `2-corridors` when the gate to short corridor is closed after 5 million steps. While QMIX fails to recover after the closure, MAVEN swiftly adapts to the change in the environment and starts using the long corridor. MAVEN’s latent space allows it to explore in a *committed* manner and associate use of the long corridor with a value of z . Furthermore, it facilitates recall of the behaviour once the short corridor becomes unavailable, which QMIX struggles with due to its representational constraints. We also introduce another new map called `zealot_cave` to test state exploration, featuring a tree-structured cave with a Zealot at all but the leaf nodes (see Fig. 5(c)). The agents consist of 2 marines who need to learn ‘kiting’ to reach all the way to the leaf nodes and get extra reward only if they always take the right branch except at the final intersection. The depth of the cave offers control over the task difficulty. Figs. 5(d) and 5(e) give the average reward received by the different algorithms for cave depths of 3 and 4. MAVEN outperforms all algorithms compared.

Representability The optimal action-value function lies outside of the representation class of the CTDE algorithm used for most interesting problems. One way to tackle this issue is to find local approximations to the optimal value function and choose the best local approximation given the observation. We hypothesise that

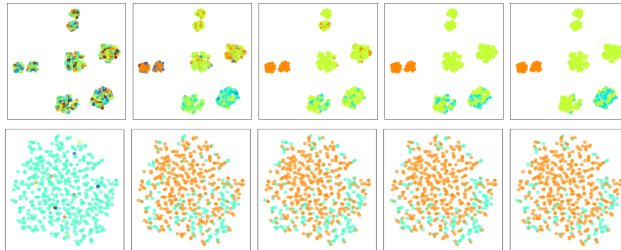


Figure 6: tsne plot for s_0 labelled with z (16 categories), initial (left) to final (right), top `3s5z`, bottom `micro_corridor`

MAVEN enables application of this principle by mapping the latent space z to local approximations and using the hierarchical policy to choose the best such approximation given the initial state s_0 , thus offering better representational capacity while respecting the constraints requiring decentralization. To demonstrate this, we plot the t-SNE [29] of the initial states and colour them according to the latent variable sampled for it using the hierarchical policy at different time steps during training. The top row of Fig. 6 gives the time evolution of the plots for `3s5z` which shows that MAVEN learns to associate the initial state clusters with the same latent value, thus partitioning the state-action space with distinct *joint behaviours*. Another interesting plot in the bottom row for `micro_corridor` demonstrates how MAVEN’s latent space allows transition to more rewarding joint behaviour which existing methods would struggle to accomplish.

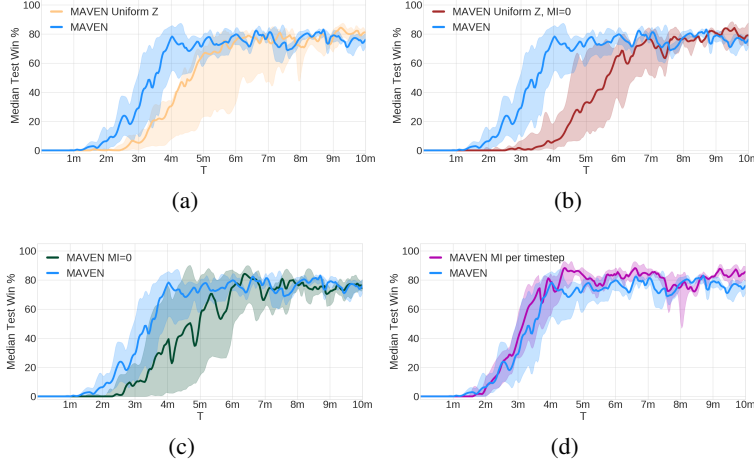


Figure 7: (a) & (b) investigate uniform hierarchical policy. (c) & (d) investigate effects of MI loss.

Ablations We perform several ablations on the `micro_corridor` scenario with $Z = 16$ to try and determine the importance of each component of MAVEN. We first consider using a fixed uniform hierarchical policy over z . Fig. 7(a) shows that MAVEN with a uniform policy over z performs worse than a learned policy. Interestingly, using a uniform hierarchical policy and no variational MI loss to encourage diversity results in a further drop in performance, as shown in Fig. 7(b). Thus sufficient diversification of the observed trajectories via an explicit agency is important to find good policies ensuring sample efficiency. Fig. 7(b) is similar to Bootstrapped-DQN [36], which has no incentive to produce diverse behaviour other than the differing initialisations depending on z . Thus, all the latent variable values can collapse to the same *joint behaviour*. If we are able to learn a hierarchical policy over z , we can focus our computation and environmental samples on the more promising variables, which allows for better final performance. Fig. 7(c) shows improved performance relative to Fig. 7(b) providing some evidence for this claim. Next, we consider how the different choices of variational MI loss (*per time step*, *per trajectory*) affect performance in Fig. 7(d). Intuitively, the per time step loss promotes a more spread out exploration as it forces the discriminator to learn the inverse map to the latent variable at each step. It thus tends to distribute its exploration budget at each step uniformly, whereas the trajectory loss allows the *joint behaviours* to be similar for extended durations and take diversifying actions at only a few time steps in a trajectory, keeping its spread fairly narrow. However, we found that in most scenarios, the two losses perform similarly. See Appendix C.2 for additional plots and ablation results.

6 Related Work

In recent years there has been considerable work extending MARL from small discrete state spaces that can be handled by tabular methods [51, 5] to high-dimensional, continuous state spaces that require the use of function approximators [13, 28, 39]. To tackle computational intractability from exponential blow-up of state-action space, Guestrin et al. [16, 17] use coordination graphs to factor large MDPs for multi-agent systems and propose inter-agent communication arising from message passing on the graphs. Similarly [45, 11, 23] model inter-agent communication explicitly. In CTDE [26], [47] extend Independent Q -Learning [48] to use DQN to learn Q -values for each agent independently. [12, 35] tackle the instability that arises from training the agents independently. Lin et al. [27] first learn a centralised controller to solve the task, and then train the agents to imitate

its behaviour. Sunehag et al. [46] propose *Value Decomposition Networks* (VDN), which learn the joint-action Q -values by factoring them as the sum of each agent’s Q -values. QMIX [40] extends VDN to allow the joint action Q -values to be a monotonic combination of each agent’s Q -Values that can vary depending on the state. Section 4 outlines how MAVEN builds upon QMIX. QTRAN [44] approaches the suboptimality vs. decentralisation tradeoff differently by introducing relaxed L2 penalties in the RL objective. [15] maximise the *empowerment* between one agents actions and the others future state in a competitive setting. Zheng et al. [52] allow each agent to condition their policies on a shared continuous latent variable. In contrast to our setting, they consider the fully-observable centralised control setting and do not attempt to enforce diversity across the shared latent variable. Aumann [1] proposes the concept of a *correlated* equilibrium in non-cooperative multi-agent settings in which each agent conditions its policy on some shared variable that is sampled every episode.

In the single agent setting, Osband et al.[36] learn an ensemble of Q -value functions (which all share weights except for the final few layers) that are trained on their own sampled trajectories to approximate a posterior over Q -values via the statistical bootstrapping method. MAVEN without the MI loss and a uniform policy over z is then equivalent to each agent using a Bootstrapped DQN. [37] extends the Bootstrapped DQN to include a prior. [7] consider the setting of *concurrent* RL in which multiple agents interact with their own environments in parallel. They aim to achieve more efficient exploration of the state-action space by seeding each agent’s parametric distributions over MDPs with different seeds, whereas MAVEN aims to achieve this by maximising the mutual information between z and a trajectory.

Yet another direction of related work lies in defining intrinsic rewards for single agent hierarchical RL that enable learning of diverse behaviours for the low level layers of the hierarchical policy. Florensa et al. [10] use hand designed state features and train the lower layers of the policy by maximising MI, and then tune the policy network’s upper layers for specific tasks. Similarly [14, 8] learn a mixture of diverse behaviours using deep neural networks to extract state features and use MI maximisation between them and the behaviours to learn useful skills without a reward function. MAVEN differs from DIAYN [8] in the use case, and also enforces *action diversification* due to MI being maximised jointly with states and actions in a trajectory. Hence, agents jointly learn to solve the task in many different ways; this is how MAVEN prevents suboptimality from representational constraints, whereas DIAYN is concerned only with discovering new states. Furthermore, DIAYN trains on diversity rewards using RL whereas we train on them via gradient ascent. Haarnoja et al. [18] use normalising flows [41] to learn hierarchical latent space policies using max entropy RL [49, 53, 9], which is related to MI maximisation but ignores the variational posterior over latent space behaviours. In a similar vein [21, 38] use auxiliary rewards to modify the RL objective towards a better tradeoff between exploration and exploitation.

7 Conclusion and Future work

In this paper, we analysed the effects of representational constraints on exploration under CTDE. We also introduced MAVEN, an algorithm that enables committed exploration while obeying such constraints. As immediate future work, we aim to develop a theoretical analysis similar to QMIX for other CTDE algorithms. We would also like to carry out empirical evaluations for MAVEN when z is continuous. To address the intractability introduced by the use of continuous latent variables, we propose the use of state-of-the-art methods from variational inference [24, 42, 41, 25]. Yet another interesting direction would be to condition the latent distribution on the joint state space at each time step and transmit it across the agents to get a low communication cost, centralised execution policy and compare its merits to existing methods [45, 11, 23].

8 Acknowledgements

AM is generously funded by the Oxford-Google DeepMind Graduate Scholarship and Drapers Scholarship. TR is funded by the Engineering and Physical Sciences Research Council (EP/M508111/1, EP/N509711/1). This project has received funding from the European Research Council under the European Union’s Horizon 2020 research and innovation programme (grant agreement number 637713). The experiments were made possible by generous equipment grant by NVIDIA and cloud credit grant from Oracle Cloud Innovation Accelerator.

References

- [1] Robert J Aumann. Subjectivity and correlation in randomized strategies. *Journal of mathematical Economics*, 1(1):67–96, 1974.

- [2] David Barber, A Taylan Cemgil, and Silvia Chiappa. *Bayesian time series models*. Cambridge University Press, 2011.
- [3] Christopher M Bishop. *Pattern recognition and machine learning*. springer, 2006.
- [4] Stephen Boyd and Lieven Vandenbergh. *Convex optimization*. Cambridge university press, 2004.
- [5] Lucian Busoniu, Robert Babuska, and Bart De Schutter. A Comprehensive Survey of Multiagent Reinforcement Learning. *IEEE Transactions on Systems, Man, and Cybernetics, Part C (Applications and Reviews)*, 38(2):156–172, 2008.
- [6] Yongcan Cao, Wenwu Yu, Wei Ren, and Guanrong Chen. An Overview of Recent Progress in the Study of Distributed Multi-agent Coordination. *IEEE Transactions on Industrial Informatics*, 9(1):427–438, 2012.
- [7] Maria Dimakopoulou and Benjamin Van Roy. Coordinated exploration in concurrent reinforcement learning. In *International Conference on Machine Learning*, pages 1270–1278, 2018.
- [8] Benjamin Eysenbach, Abhishek Gupta, Julian Ibarz, and Sergey Levine. Diversity is all you need: Learning skills without a reward function. *arXiv preprint arXiv:1802.06070*, 2018.
- [9] Matthew Fellows, Anuj Mahajan, Tim GJ Rudner, and Shimon Whiteson. Virel: A variational inference framework for reinforcement learning. *arXiv preprint arXiv:1811.01132*, 2018.
- [10] Carlos Florensa, Yan Duan, and Pieter Abbeel. Stochastic neural networks for hierarchical reinforcement learning. *arXiv preprint arXiv:1704.03012*, 2017.
- [11] Jakob Foerster, Ioannis Alexandros Assael, Nando de Freitas, and Shimon Whiteson. Learning to communicate with deep multi-agent reinforcement learning. In *Advances in Neural Information Processing Systems*, pages 2137–2145, 2016.
- [12] Jakob Foerster, Nantas Nardelli, Gregory Farquhar, Triantafyllos Afouras, Philip H. S. Torr, Pushmeet Kohli, and Shimon Whiteson. Stabilising Experience Replay for Deep Multi-Agent Reinforcement Learning. In *Proceedings of The 34th International Conference on Machine Learning*, pages 1146–1155, 2017.
- [13] Jakob N Foerster, Gregory Farquhar, Triantafyllos Afouras, Nantas Nardelli, and Shimon Whiteson. Counterfactual multi-agent policy gradients. In *Thirty-Second AAAI Conference on Artificial Intelligence*, 2018.
- [14] Karol Gregor, Danilo Jimenez Rezende, and Daan Wierstra. Variational intrinsic control. *arXiv preprint arXiv:1611.07507*, 2016.
- [15] Christian Guckelsberger, Christoph Salge, and Julian Togelius. New and surprising ways to be mean. adversarial npcs with coupled empowerment minimisation. *arXiv preprint arXiv:1806.01387*, 2018.
- [16] Carlos Guestrin, Daphne Koller, and Ronald Parr. Multiagent Planning with Factored MDPs. In *Advances in Neural Information Processing Systems*, pages 1523–1530. MIT Press, 2002.
- [17] Carlos Guestrin, Daphne Koller, Ronald Parr, and Shobha Venkataraman. Efficient solution algorithms for factored mdps. *Journal of Artificial Intelligence Research*, 19:399–468, 2003.
- [18] Tuomas Haarnoja, Kristian Hartikainen, Pieter Abbeel, and Sergey Levine. Latent space policies for hierarchical reinforcement learning. *arXiv preprint arXiv:1804.02808*, 2018.
- [19] Matthew Hausknecht and Peter Stone. Deep Recurrent Q-Learning for Partially Observable MDPs. In *AAAI Fall Symposium on Sequential Decision Making for Intelligent Agents*, 2015.
- [20] Sepp Hochreiter and Jürgen Schmidhuber. Long short-term memory. *Neural computation*, 9(8):1735–1780, 1997.

- [21] Rein Houthooft, Xi Chen, Yan Duan, John Schulman, Filip De Turck, and Pieter Abbeel. Vime: Variational information maximizing exploration. In *Advances in Neural Information Processing Systems*, pages 1109–1117, 2016.
- [22] Maximilian Hüttenrauch, Adrian Šošić, and Gerhard Neumann. Guided Deep Reinforcement Learning for Swarm Systems. In *AAMAS 2017 Autonomous Robots and Multirobot Systems (ARMS) Workshop*, 2017.
- [23] Jiechuan Jiang and Zongqing Lu. Learning attentional communication for multi-agent cooperation. In *Advances in Neural Information Processing Systems*, pages 7254–7264, 2018.
- [24] Diederik P Kingma and Max Welling. Stochastic gradient vb and the variational auto-encoder. In *Second International Conference on Learning Representations, ICLR*, 2014.
- [25] Durk P Kingma, Tim Salimans, Rafal Jozefowicz, Xi Chen, Ilya Sutskever, and Max Welling. Improved variational inference with inverse autoregressive flow. In *Advances in neural information processing systems*, pages 4743–4751, 2016.
- [26] Landon Kraemer and Bikramjit Banerjee. Multi-agent reinforcement learning as a rehearsal for decentralized planning. *Neurocomputing*, 190:82–94, 2016.
- [27] Alex Tong Lin, Mark J DeBord, Katia Estabridis, Gary Hower, and Stanley Osher. Cesma: Centralized expert supervises multi-agents. *arXiv preprint arXiv:1902.02311*, 2019.
- [28] Ryan Lowe, Yi Wu, Aviv Tamar, Jean Harb, OpenAI Pieter Abbeel, and Igor Mordatch. Multi-agent actor-critic for mixed cooperative-competitive environments. In *Advances in Neural Information Processing Systems*, pages 6379–6390, 2017.
- [29] Laurens van der Maaten and Geoffrey Hinton. Visualizing data using t-sne. *Journal of machine learning research*, 9(Nov):2579–2605, 2008.
- [30] Anuj Mahajan and Theja Tulabandhula. Symmetry detection and exploitation for function approximation in deep rl. In *Proceedings of the 16th Conference on Autonomous Agents and MultiAgent Systems*, pages 1619–1621. International Foundation for Autonomous Agents and Multiagent Systems, 2017.
- [31] Anuj Mahajan and Theja Tulabandhula. Symmetry learning for function approximation in reinforcement learning. *arXiv preprint arXiv:1706.02999*, 2017.
- [32] Andriy Mnih and Karol Gregor. Neural variational inference and learning in belief networks. *arXiv preprint arXiv:1402.0030*, 2014.
- [33] Volodymyr Mnih, Koray Kavukcuoglu, David Silver, Alex Graves, Ioannis Antonoglou, Daan Wierstra, and Martin Riedmiller. Playing atari with deep reinforcement learning. *arXiv preprint arXiv:1312.5602*, 2013.
- [34] Frans A. Oliehoek and Christopher Amato. *A Concise Introduction to Decentralized POMDPs*. SpringerBriefs in Intelligent Systems. Springer, 2016.
- [35] Shayegan Omidshafiei, Jason Pazis, Christopher Amato, Jonathan P. How, and John Vian. Deep Decentralized Multi-task Multi-Agent RL under Partial Observability. In *Proceedings of the 34th International Conference on Machine Learning*, pages 2681–2690, 2017.
- [36] Ian Osband, Charles Blundell, Alexander Pritzel, and Benjamin Van Roy. Deep exploration via bootstrapped dqn. In *Advances in neural information processing systems*, pages 4026–4034, 2016.
- [37] Ian Osband, Benjamin Van Roy, Daniel Russo, and Zheng Wen. Deep exploration via randomized value functions. *arXiv preprint arXiv:1703.07608*, 2017.
- [38] Deepak Pathak, Pulkrit Agrawal, Alexei A. Efros, and Trevor Darrell. Curiosity-driven exploration by self-supervised prediction. In *ICML*, 2017.

- [39] Peng Peng, Ying Wen, Yaodong Yang, Quan Yuan, Zhenkun Tang, Haitao Long, and Jun Wang. Multiagent Bidirectionally-Coordinated Nets: Emergence of Human-level Coordination in Learning to Play StarCraft Combat Games. *arXiv preprint arXiv:1703.10069*, 2017.
- [40] Tabish Rashid, Mikayel Samvelyan, Christian Schroeder de Witt, Gregory Farquhar, Jakob Foerster, and Shimon Whiteson. QMIX: Monotonic Value Function Factorisation for Deep Multi-Agent Reinforcement Learning. In *Proceedings of the 35th International Conference on Machine Learning*, pages 4295–4304, 2018.
- [41] Danilo Jimenez Rezende and Shakir Mohamed. Variational inference with normalizing flows. *arXiv preprint arXiv:1505.05770*, 2015.
- [42] Danilo Jimenez Rezende, Shakir Mohamed, and Daan Wierstra. Stochastic backpropagation and approximate inference in deep generative models. *arXiv preprint arXiv:1401.4082*, 2014.
- [43] Mikayel Samvelyan, Tabish Rashid, Christian Schroeder de Witt, Gregory Farquhar, Nantas Nardelli, Tim GJ Rudner, Chia-Man Hung, Philip HS Torr, Jakob Foerster, and Shimon Whiteson. The StarCraft Multi-Agent Challenge. In *Proceedings of the 18th International Conference on Autonomous Agents and MultiAgent Systems*, 2019.
- [44] Kyunghwan Son, Daewoo Kim, Wan Ju Kang, David Earl Hostallero, and Yung Yi. Qtran: Learning to factorize with transformation for cooperative multi-agent reinforcement learning. *arXiv preprint arXiv:1905.05408*, 2019.
- [45] Sainbayar Sukhbaatar, Rob Fergus, et al. Learning multiagent communication with backpropagation. In *Advances in Neural Information Processing Systems*, pages 2244–2252, 2016.
- [46] Peter Sunehag, Guy Lever, Audrunas Gruslys, Wojciech Marian Czarnecki, Vinicius Zambaldi, Max Jaderberg, Marc Lanctot, Nicolas Sonnerat, Joel Z Leibo, Karl Tuyls, et al. Value-decomposition networks for cooperative multi-agent learning. *arXiv preprint arXiv:1706.05296*, 2017.
- [47] Ardi Tampuu, Taimet Matiisen, Dorian Kodelja, Ilya Kuzovkin, Kristjan Korjus, Juhan Aru, Jaan Aru, and Raul Vicente. Multiagent cooperation and competition with deep reinforcement learning. *PloS one*, 2017.
- [48] Ming Tan. Multi-agent reinforcement learning: Independent vs. cooperative agents. In *Proceedings of the tenth international conference on machine learning*, pages 330–337, 1993.
- [49] Emanuel Todorov. Linearly-solvable markov decision problems. In *Advances in neural information processing systems*, pages 1369–1376, 2007.
- [50] Martin J Wainwright, Michael I Jordan, et al. Graphical models, exponential families, and variational inference. *Foundations and Trends® in Machine Learning*, 1(1–2):1–305, 2008.
- [51] Erfu Yang and Dongbing Gu. Multiagent reinforcement learning for multi-robot systems: A survey. Technical report, 2004.
- [52] Stephan Zheng and Yisong Yue. Structured exploration via hierarchical variational policy networks. 2018.
- [53] Brian D Ziebart, Andrew L Maas, J Andrew Bagnell, and Anind K Dey. Maximum entropy inverse reinforcement learning. In *Aaai*, volume 8, pages 1433–1438. Chicago, IL, USA, 2008.

A QMIX Architecture

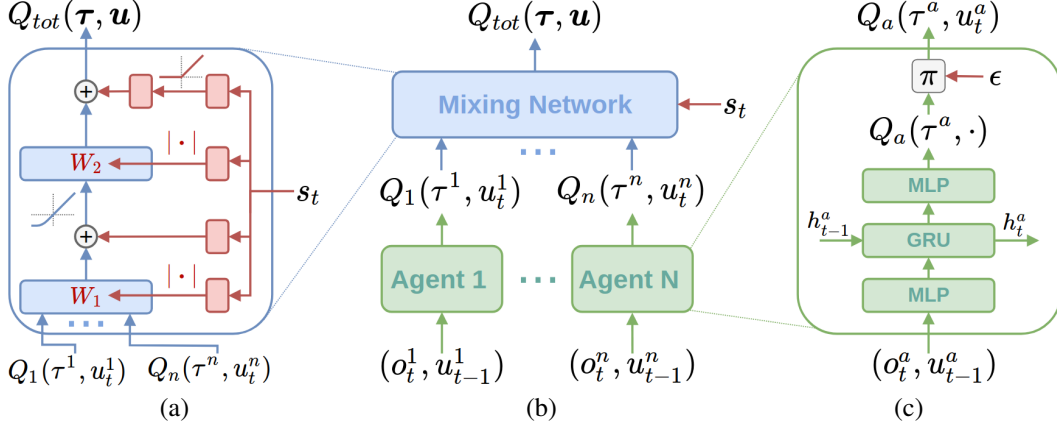


Figure 8: The overall setup of QMIX, reproduced from the original paper [40] (a) Mixing network structure. In red are the hypernetworks that produce the weights and biases for mixing network layers shown in blue. (b) The overall QMIX architecture. (c) Agent network structure. Best viewed in colour.

B Proofs

B.1 Uniform visitation

Theorem 1. For n player, $k \geq 3$ action matrix games ($|\mathcal{A}| = n$, $|U| = k$), under uniform visitation; Q_{qmix} learns a δ -suboptimal policy for any time horizon T , for any $0 < \delta \leq R \left[\sqrt{\frac{a(b+1)}{a+b}} - 1 \right]$ for the payoff matrix given by the template below, where $b = \sum_{s=1}^{k-2} \binom{n+s-1}{s}$, $a = k^n - (b+1)$, $R > 0$:

$$\begin{bmatrix} R + \delta & 0 & \dots & R \\ 0 & & \ddots & \\ \vdots & \ddots & & \vdots \\ R & \dots & & R \end{bmatrix}$$

Proof. For single state MDPs, under uniform visitation of the joint state-action space, QMIX can be seen as minimising the mean squared error between the actual Q -values and the monotonic projection Q_{qmix} . Using the symmetry of the problem and an exchange argument, it can be shown that only the monotonic projections of the following form need to be considered:

$$\begin{bmatrix} x_3 & x_2 & \dots & x_1 \\ x_2 & & \ddots & \\ \vdots & \ddots & & \vdots \\ x_1 & \dots & & x_1 \end{bmatrix}$$

where $X \triangleq (x_1, x_2, x_3)$. Consequently, there are two cases for the monotonic approximations. We refer to them as $M1$ and $M2$ corresponding to $x_1 \geq x_2 \geq x_3$ and $x_1 \leq x_2 \leq x_3$ cases respectively. The optimization problem for $M1$ is:

$$\begin{aligned} M1 : \\ \underset{X}{\text{minimise}} \quad & a(x_1 - R)^2 + bx_2^2 + (x_3 - (R + \delta))^2 \\ \text{s.t.} \quad & x_2 - x_1 \leq 0 \\ & x_3 - x_2 \leq 0 \end{aligned}$$

where $b = \sum_{s=1}^{k-2} \binom{n+s-1}{s}$, $a = k^n - (b+1)$ are the coefficients corresponding to the number of entries for the general n player, k action game (having k^n entries). It is thus evident that the above

problem is a quadratic program and is indeed convex [4] as the Hessian of the objective $\text{diag}(a, b, 1)$ is positive definite. The Lagrangian is given by:

$$\mathcal{L}(X, \lambda_1, \lambda_2) = a(x_1 - R)^2 + bx_2^2 + (x_3 - (R + \delta))^2 + \lambda_1(x_2 - x_1) + \lambda_2(x_3 - x_2)$$

where λ_1, λ_2 are the dual variables. Moreover, the above problem also satisfies Slater's conditions which implies that KKT conditions are necessary and sufficient for finding the primal and dual optimal. By setting $\nabla_X \mathcal{L} = 0$, we get:

$$\begin{aligned}\lambda_1 &= 2a(x_1 - R) \\ \lambda_2 &= 2a(R + \delta - x_3) \\ x_2 &= \frac{\lambda_2 - \lambda_1}{2b}\end{aligned}$$

Using primal and dual feasibility constraints along with complementary slackness, we can see that $x_1 = R, x_2 = x_3 = \frac{R+\delta}{1+b}$ is an optimal solution to $M1$ for $\delta \leq bR$ with the optimal value for the problem as $OPT(M1) = \frac{b(R+\delta)^2}{b+1}$. By solving $M2$ in a similar way for the reversed primal constraints $x_2 - x_1 \geq 0, x_3 - x_2 \geq 0$, we see that an optimal assignment is $x_1 = x_2 = \frac{aR}{b+a}, x_3 = R + \delta$ with the optimal value given by $OPT(M2) = \frac{R^2 ab}{a+b}$. Note that the solution to $M1$ corresponds to the suboptimal policy of picking action corresponding to payoff R , whereas the solution to $M2$ corresponds to that of picking the optimal action with payoff $R + \delta$ (as QMIX picks the action corresponding to the maximal entry of a monotonic projection). For QMIX to learn the suboptimal policy corresponding to $M1$, we require that $OPT(M1) \leq OPT(M2)$. Consequently,

$$\begin{aligned}\frac{b(R + \delta)^2}{b + 1} &\leq \frac{R^2 ab}{a + b} \\ \implies \delta &\leq R \left[\sqrt{\frac{a(b + 1)}{a + b}} - 1 \right]\end{aligned}\tag{2}$$

□

B.2 ϵ -greedy visitation

Theorem 2. For n player, $k \geq 3$ action matrix games, under ϵ -greedy visitation $\epsilon(t)$; Q_{qmix} learns a δ -suboptimal policy for any time horizon T with probability $\geq 1 - \left(\exp(-\frac{Tv^2}{2}) + (k^n - 1) \exp(-\frac{Tv^2}{2(k^n - 1)^2}) \right)$, for any $0 < \delta \leq R \left[\sqrt{a \left(\frac{vb}{2(1-v/2)(a+b)} + 1 \right)} - 1 \right]$ for the payoff matrix given by the template above, where $b = \sum_{s=1}^{k-2} \binom{n+s-1}{s}$, $a = k^n - (b + 1)$, $R > 0$ and $v = \epsilon(T)$.

Proof. Given the exploration schedule $\epsilon(t)$, let $\epsilon(T) = v$ (which is the minimum value since $\epsilon(t)$ is decreasing in T). We reuse the machinery introduced in Appendix B.1 and provide an analysis which is agnostic to the actions actually visited by considering the adversarial case for the maximum possible δ for which Q_{qmix} fails. This happens precisely when QMIX is provided with the "best opportunity" for learning the optimal policy (so that it visits the optimal action with probability $1 - \epsilon(t), \forall t$). Therefore, the visitation frequencies we consider are: $\frac{Tv}{k^n - 1}$ for any suboptimal action and $T(1 - v)$ for the optimal action. To compute the upper bound on δ , we modify the objective for the quadratic program in Appendix B.1 as $X^T \text{diag}(a', b', 1)X$ where $a' \leftarrow \frac{av}{(1-v)(a+b)}, b' \leftarrow \frac{bv}{(1-v)(a+b)}$ in accordance with our visitations. Next, using the same reasoning as in Eq. (2), we get that QMIX learns the suboptimal policy for

$$0 < \delta \leq R \left[\sqrt{a \left(\frac{vb}{(1-v)(a+b)} + 1 \right)} - 1 \right].\tag{3}$$

Note that the upper bound of δ in Eq. (3) is probabilistic in nature. Therefore, we provide a lower bound on the probability of this by considering the RHS of Eq. (3) with $v \leftarrow v/2$ and bounding the

probability of deviation from the worst case visitation frequencies. By making use of the Hoeffding’s lemma, we derive that:

$$P\left[\text{empirical frequency of optimal} - vT \geq \frac{Tv}{2}\right] \leq \exp\left(-\frac{Tv^2}{2}\right),$$

$$P\left[\text{empirical frequency of suboptimal} - \frac{Tv}{k^n - 1} \leq -\frac{Tv}{2(k^n - 1)}\right] \leq \exp\left(-\frac{Tv^2}{2(k^n - 1)^2}\right).$$

Finally, by using the union bound, we conclude that with probability $\geq 1 - \left(\exp\left(-\frac{Tv^2}{2}\right) + (k^n - 1) \exp\left(-\frac{Tv^2}{2(k^n - 1)^2}\right)\right)$, QMIX fails to learn the optimal policy for

$$0 < \delta \leq R \left[\sqrt{a \left(\frac{vb}{2(1 - v/2)(a + b)} + 1 \right)} - 1 \right]$$

□

B.3 Variational Mutual Information lower bound

Let the posterior over z be given by $\log(p(z|\sigma(\mathbf{u}, s)))$ and the variational approximation by $q_v(z|\sigma(\mathbf{u}, s))$

$$\begin{aligned} \mathcal{J}_{MI} &= \mathcal{H}(\sigma(\mathbf{u}, s)) - \mathcal{H}(\sigma(\mathbf{u}, s)|z) \\ &= \mathcal{H}(z) - \mathcal{H}(z|\sigma(\mathbf{u}, s)) \quad \{\text{MI is symmetric}\} \\ &= \mathcal{H}(z) + \mathbb{E}_{\sigma(\mathbf{u}, s)}[\mathbb{E}_z[\log(p(z|\sigma(\mathbf{u}, s)))] \quad \{\text{Def. conditional entropy}\}] \\ &= \mathcal{H}(z) + \mathbb{E}_{\sigma(\mathbf{u}, s)}[\mathbb{E}_z[\log(p(z|\sigma(\mathbf{u}, s))) - \log(q_v(z|\sigma(\mathbf{u}, s))) + \log(q_v(z|\sigma(\mathbf{u}, s)))] \\ &= \mathcal{H}(z) + \mathbb{E}_{\sigma(\mathbf{u}, s)}[\mathbb{E}_z[\log(q_v(z|\sigma(\mathbf{u}, s)))] + \mathbb{E}_{\sigma(\mathbf{u}, s)}[KL(p(z|\sigma(\mathbf{u}, s))||q_v(z|\sigma(\mathbf{u}, s)))] \\ &\geq \mathcal{H}(z) + \mathbb{E}_{\sigma(\mathbf{u}, s), z}[\log(q_v(z|\sigma(\mathbf{u}, s)))] \quad \{\text{KL is non negative}\} \end{aligned}$$

C Experimental Setup

C.1 Architecture and Training

All agent are designed as Deep Recurrent Q-Networks [19]. At each time step, each agent network receives a local observation as input, which is fed to a 64-dimensional fully-connected hidden layer, followed by a GRU recurrent layer and a fully-connected layer with $|U|$ outputs. To speed up the learning, all agent networks share the same set of parameters. A one-hot encoded agent id is concatenated to agent observations. The architectures for mixing and utility networks are the same as in [40].

For all experiments we update the target networks after every 200 episodes. We set $\gamma = 0.99$. The optimisation is conducted using RMSprop with a learning rate of 5×10^{-4} and $\alpha = 0.99$ with no weight decay or momentum.

C.1.1 SMAC

Exploration for QMIX is performed during training during which each agent executes ϵ -greedy policy over its own actions. ϵ is annealed from 1.0 to 0.05 or 0.005 over 50k time steps and is kept constant afterwards.

We utilise a replay buffer of the most recent 5000 environment steps. A single training step for a batch of size 32 entire episodes is performed after every episodes.

We set $Z = 16$ for all the experiments. We set $\lambda_{MI} = 0.001$ and $\lambda_{QL} = 1$. Unless otherwise mentioned, all MAVEN experiments use the trajectory-based MI loss. We use an entropy regularisation term with a coefficient of 0.001 for the hierarchical policy. We set the final value of ϵ to 0.05 for MAVEN and QMIX.

All SMAC experiments use the default reward and observation settings of the SMAC benchmark [43].

We run all methods for 10 million environmental steps. This takes approximately 36 hours on a NVIDIA GTX 1080Ti GPU for 12 random initializations.

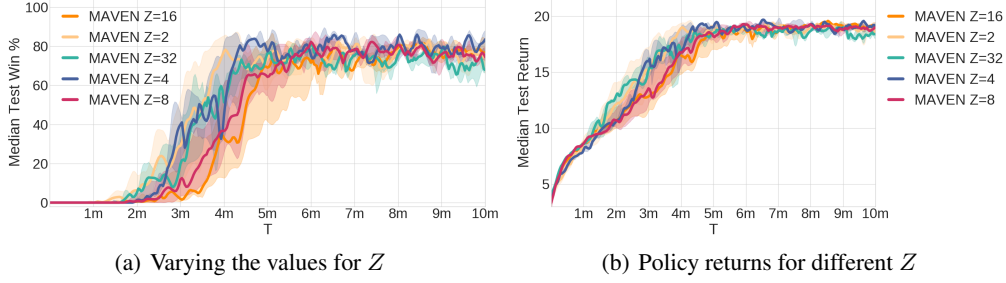


Figure 9: Performance with varying the number of latent variable categories

C.1.2 m -step matrix games

All methods anneal ϵ from 1 to 0.01 over 100 timesteps and keep it constant afterwards.

A single training step for a batch of size 32 is conducted after every episode.

All methods are run for $100k$ timesteps.

For MAVEN we set $Z = 16$, $\lambda_{MI} = 1$, $\lambda_{QL} = 1$ and use an entropy regularisation term with a coefficient of 0.001 for the hierarchical policy.

C.2 Additional plots & ablations

We also consider varying the number of categories for the discrete latent variable Fig. 9(a). While the number of categories loosely correlates with performance, it was not always the case. For `micro_corridor`, the results are inconclusive because they all use the same budget of gradient updates, yielding two opposing factors that cancel out (more z 's vs. less training per z). Fig. 9(b) gives the returns of the corresponding policies learnt.

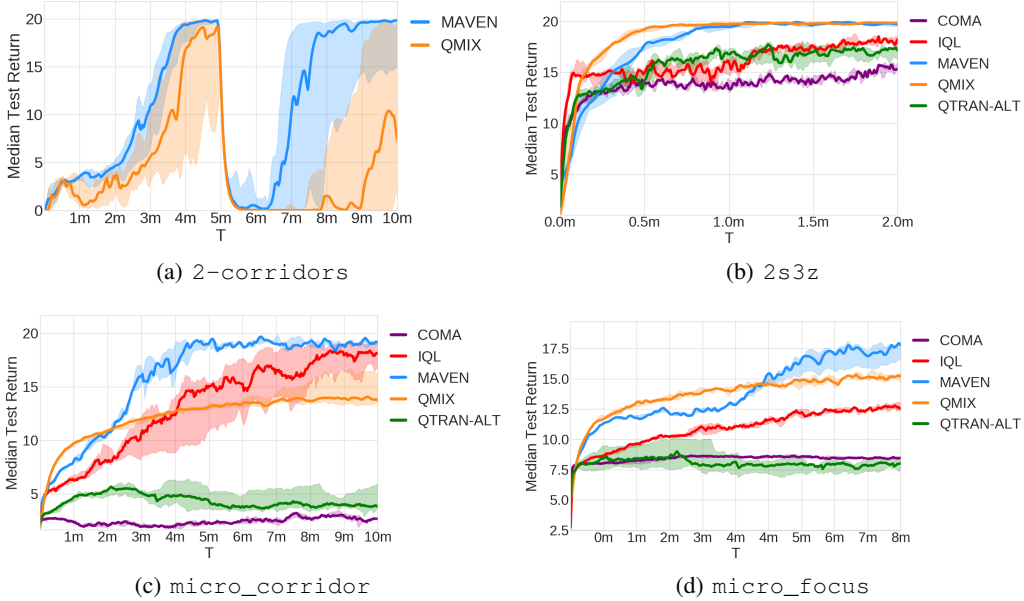


Figure 10: Median test returns on SMAC scenarios.